



# hnRNP A2/B1 Polyclonal Antibody

<b>Catalog No</b>	YP-Ab-01799
<b>Isotype</b>	IgG
<b>Reactivity</b>	Human;Mouse
<b>Applications</b>	WB;IHC;IF;ELISA
<b>Gene Name</b>	HNRNPA2B1
<b>Protein Name</b>	Heterogeneous nuclear ribonucleoproteins A2/B1
<b>Immunogen</b>	The antiserum was produced against synthesized peptide derived from human hnRNP A2/B1. AA range:1-50
<b>Specificity</b>	hnRNP A2/B1 Polyclonal Antibody detects endogenous levels of hnRNP A2/B1 protein.
<b>Formulation</b>	Liquid in PBS containing 50% glycerol, 0.5% BSA and 0.02% sodium azide.
<b>Source</b>	Polyclonal, Rabbit,IgG
<b>Purification</b>	The antibody was affinity-purified from rabbit antiserum by affinity-chromatography using epitope-specific immunogen.
<b>Dilution</b>	Western Blot: 1/500 - 1/2000. Immunohistochemistry: 1/100 - 1/300. Immunofluorescence: 1/200 - 1/1000. ELISA: 1/20000. Not yet tested in other applications.
<b>Concentration</b>	1 mg/ml
<b>Purity</b>	≥90%
<b>Storage Stability</b>	-20°C/1 year
<b>Synonyms</b>	HNRNPA2B1; HNRPA2B1; Heterogeneous nuclear ribonucleoproteins A2/B1; hnRNP A2/B1
<b>Observed Band</b>	36+38kD
<b>Cell Pathway</b>	Nucleus . Nucleus, nucleoplasm . Cytoplasm . Cytoplasmic granule . Secreted, extracellular exosome . Localized in cytoplasmic mRNP granules containing untranslated mRNAs (PubMed:17289661). Component of ribonucleosomes (PubMed:17289661). Not found in the nucleolus (PubMed:24356509). . ; [Isoform A2]: Nucleus . Cytoplasm . Predominantly nucleoplasmic, however is also found in the cytoplasm of cells in some tissues (PubMed:17289661). .
<b>Tissue Specificity</b>	Brain,Cajal-Retzius cell,Cervix carcinoma,Epitheliu
<b>Function</b>	function:Involved with pre-mRNA processing. Forms complexes (ribonucleosomes) with at least 20 other different hnRNP and heterogeneous nuclear RNA in the nucleus.,similarity:Contains 2 RRM (RNA recognition motif) domains.,subcellular location:Component of ribonucleosomes. Predominantly nucleoplasmic, however isoform A2 is also found in the cytoplasm of cells in some tissues. Not found in the nucleolus.,subunit:Identified in the spliceosome C complex, at least composed of AQR, ASCC3L1, C19orf29, CDC40, CDC5L, CRNKL1, DDX23, DDX41, DDX48, DDX5, DGCR14, DHX35, DHX38, DHX8,



EFTUD2, FRG1, GPATC1, HNRNPA1, HNRNPA2B1, HNRPA3, HNRNPC, HNRPF, HNRPH1, HNRPK, HNRPM, HNRNPR, HNRNPU, KIAA1160, KIAA1604, LSM2, LSM3, MAGOH, MORG1, PABPC1, PLRG1, PNN, PPIE, PPIL1, PPIL3, PPWD1, PRPF19, PRPF4B, PRPF6, PRPF8, RALY, RBM22, RBM8A, RBMX, SART1, SF3A1, SF3A2, SF3A3, SF3B1, SF3B2, SF3B3, SFRS1, SKIV2L2, SNRPA

**Background**

This gene belongs to the A/B subfamily of ubiquitously expressed heterogeneous nuclear ribonucleoproteins (hnRNPs). The hnRNPs are RNA binding proteins and they complex with heterogeneous nuclear RNA (hnRNA). These proteins are associated with pre-mRNAs in the nucleus and appear to influence pre-mRNA processing and other aspects of mRNA metabolism and transport. While all of the hnRNPs are present in the nucleus, some seem to shuttle between the nucleus and the cytoplasm. The hnRNP proteins have distinct nucleic acid binding properties. The protein encoded by this gene has two repeats of quasi-RRM domains that bind to RNAs. This gene has been described to generate two alternatively spliced transcript variants which encode different isoforms. [provided by RefSeq, Jul 2008],

**matters needing attention**

Avoid repeated freezing and thawing!

**Usage suggestions**

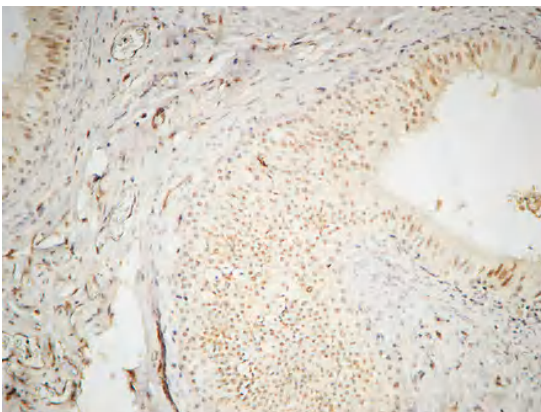
This product can be used in immunological reaction related experiments. For more information, please consult technical personnel.



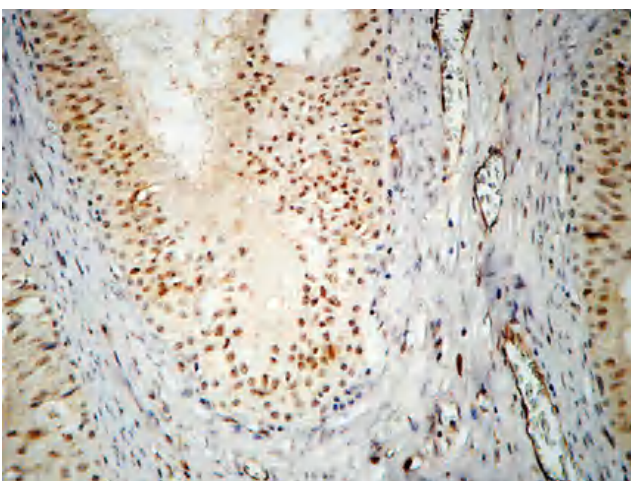
## Products Images



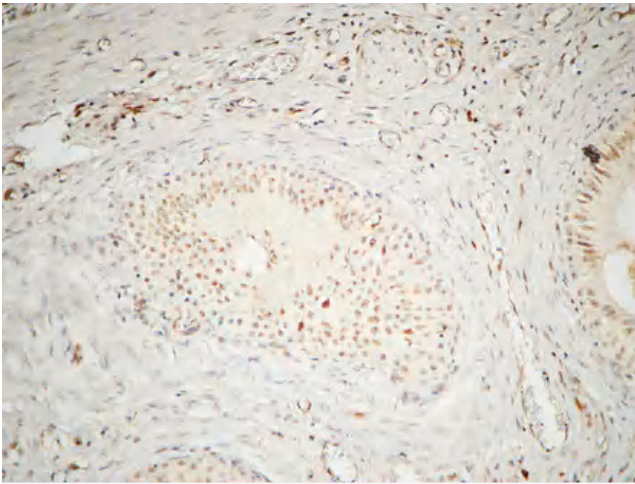
Western Blot analysis of various cells using hnRNP A2/B1 Polyclonal Antibody diluted at 1:1000



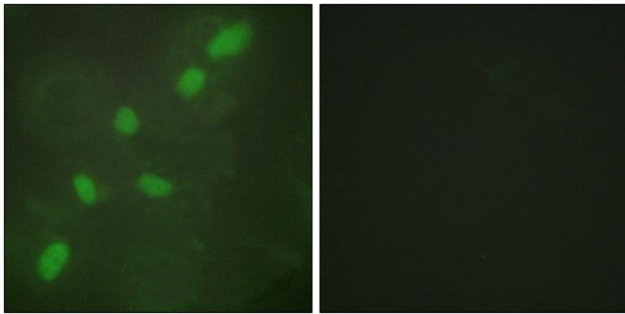
Immunohistochemical analysis of paraffin-embedded Human testis. 1, Antibody was diluted at 1:200(4° overnight). 2, High-pressure and temperature EDTA, pH8.0 was used for antigen retrieval. 3, Secondary antibody was diluted at 1:200(room temperature, 30min).



Immunohistochemical analysis of paraffin-embedded Human testis. 1, Antibody was diluted at 1:200(4° overnight). 2, High-pressure and temperature EDTA, pH8.0 was used for antigen retrieval. 3, Secondary antibody was diluted at 1:200(room temperature, 30min).



Immunohistochemical analysis of paraffin-embedded Human testis. 1, Antibody was diluted at 1:200(4° overnight). 2, High-pressure and temperature EDTA, pH8.0 was used for antigen retrieval. 3, Secondary antibody was diluted at 1:200(room temperature, 30min).



Immunofluorescence analysis of HeLa cells, using hnRNP A2/B1 Antibody. The picture on the right is blocked with the synthesized peptide.